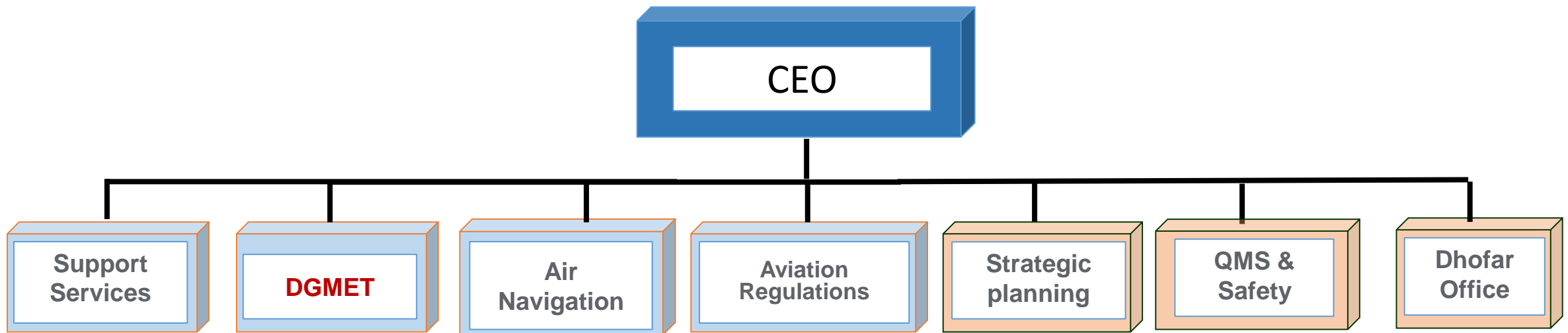


- 1973 , the opening of Seeb Int. Airport (later named Muscat Int. Airport), A forecasting section was introduced to provide weather services for aviation.

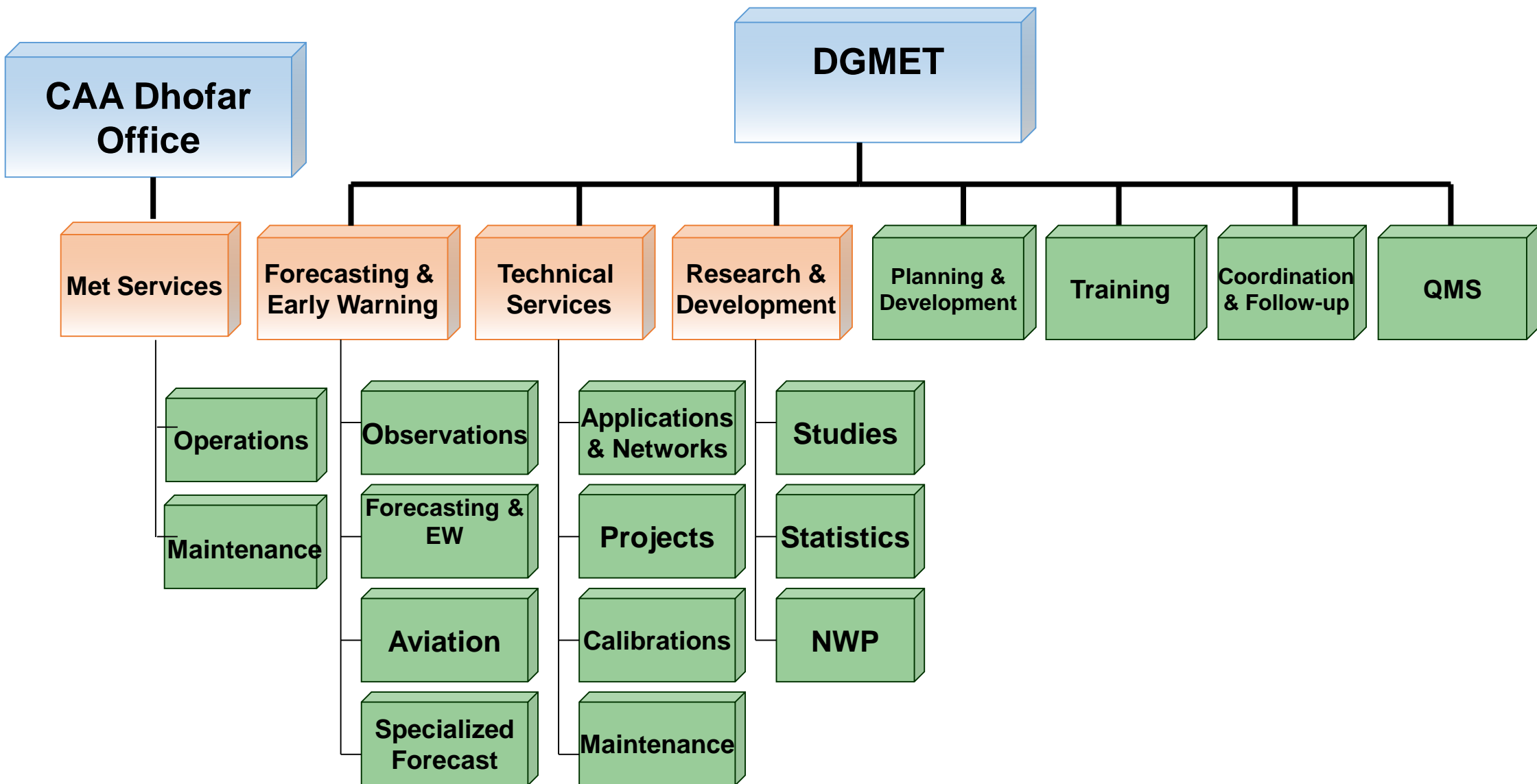


Brief History of Oman Meteorological Services

- 2012 Royal Decree (33/2012) establish Civil Aviation Authority (CAA) and DGMET as a directorate general within CAA



Structure of DGMET



To have resilient Multi-Hazard Early Warning

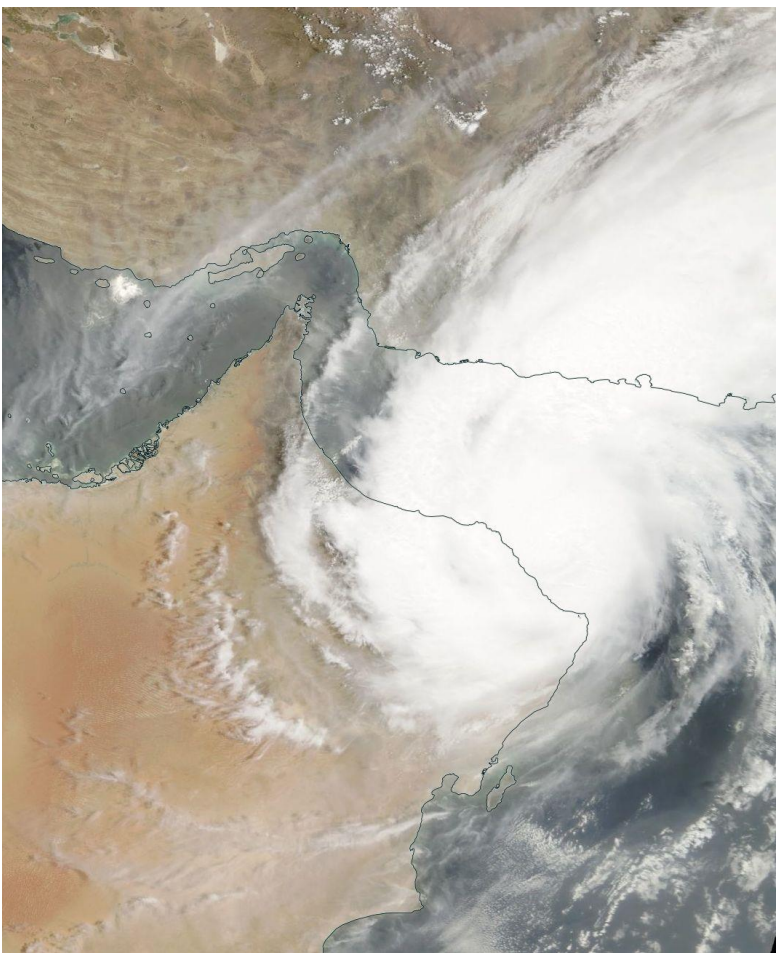
Why?

1- It provides valuable time for preparation before impact



2- Because it is economically justified

Tropical Cyclone Gonu Legacy (6-7 June 2007)



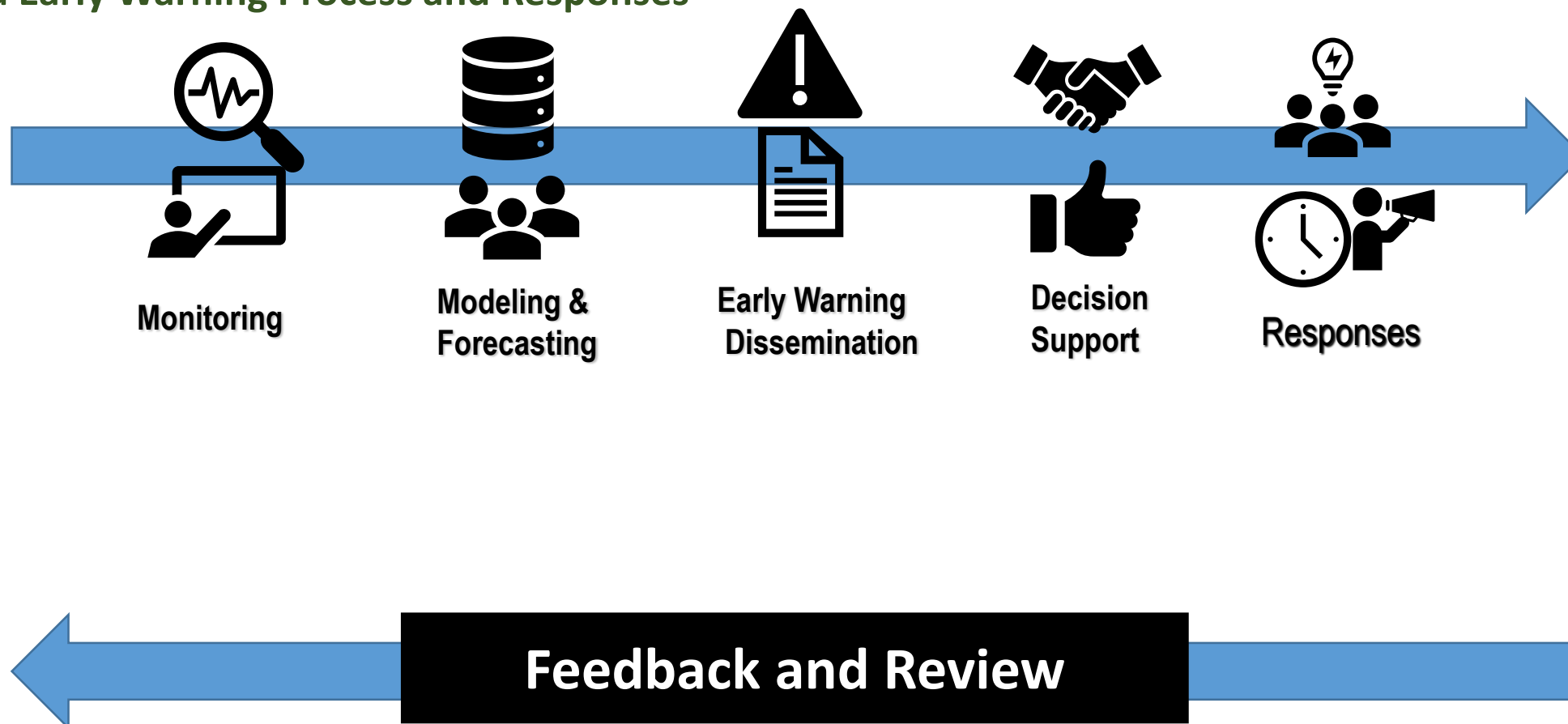
	Gonu	Mekunu
Casualties	50	7
Damage	4.2 Billion (2007 USD \$)	400 million (2018 USD \$)



3- There are many stakeholders in crisis management

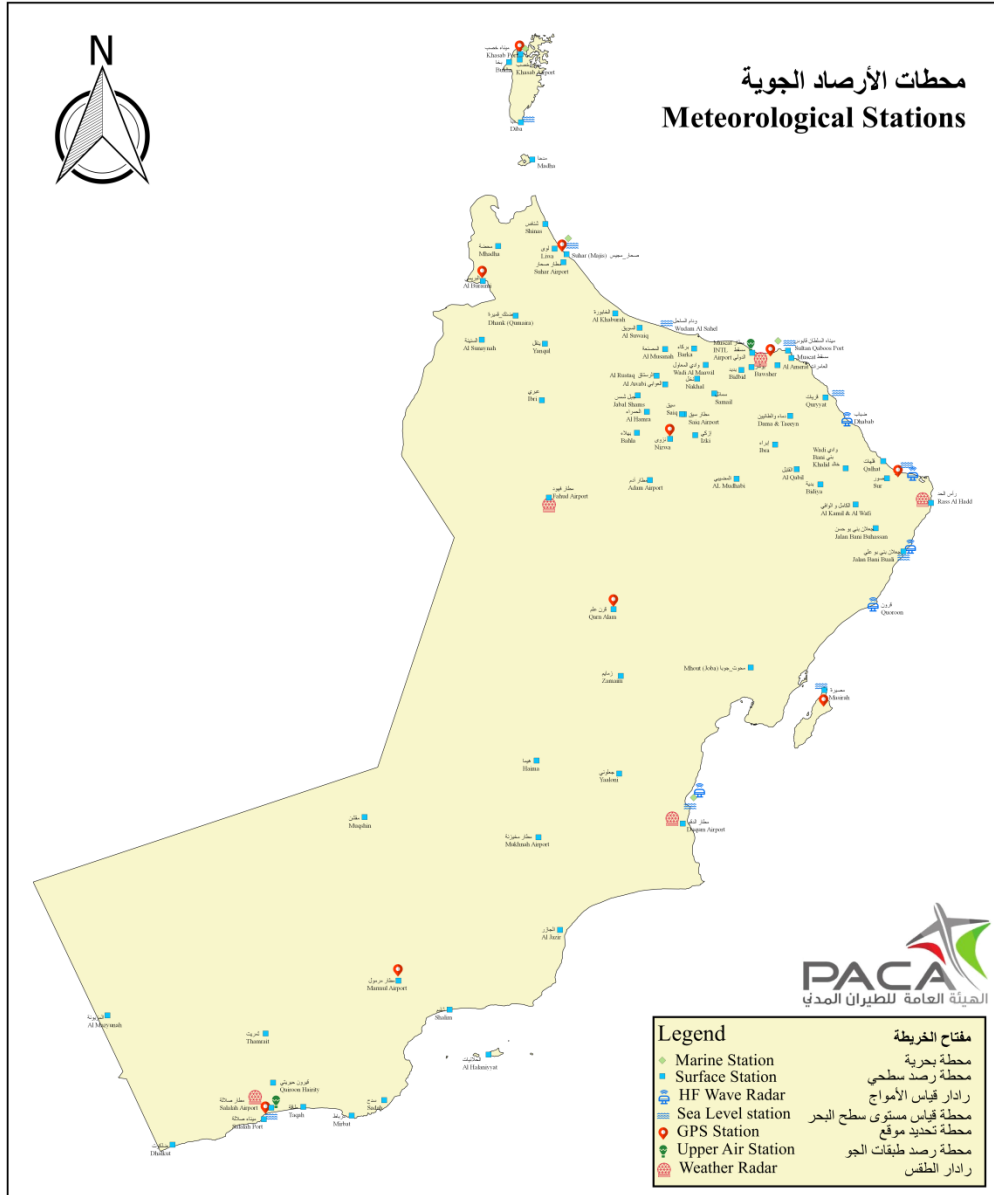
DGMET , ROP , PACDA, NCCD, TVs, Radios and many other Gov ,Privet and Public Sectors

End to End Early Warning Process and Responses



Six components for a resilient Multi-Hazard Early Warning System

1. Observation and Monitoring Capabilities ←
2. Hazard Modeling and Assessing
3. Building Bridges with stakeholders
4. Standard Operating Procedures
5. Preparedness and Public Awareness
6. Research and Development ←



Observation Network

العدد
4
75
6
10
10
2
5

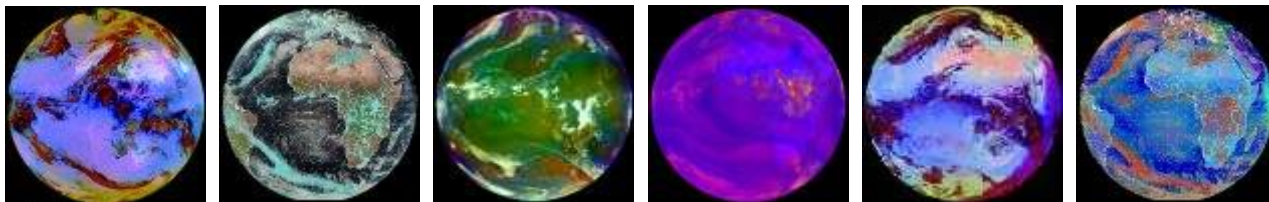
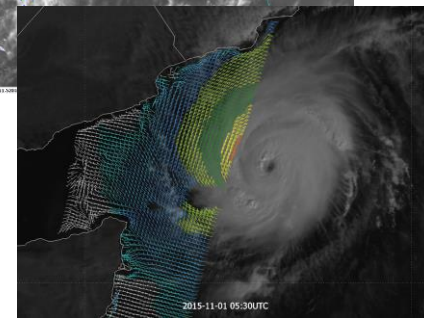
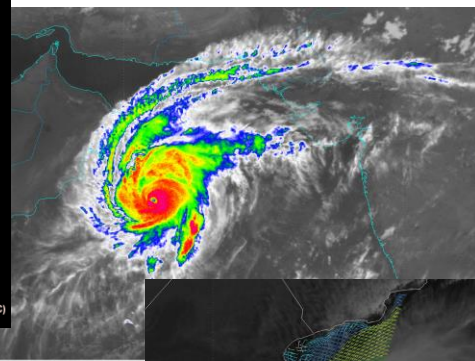
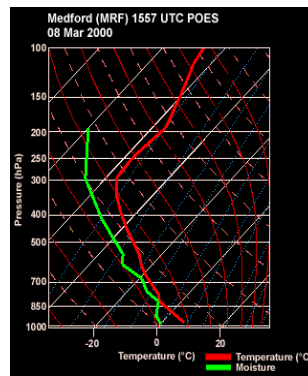
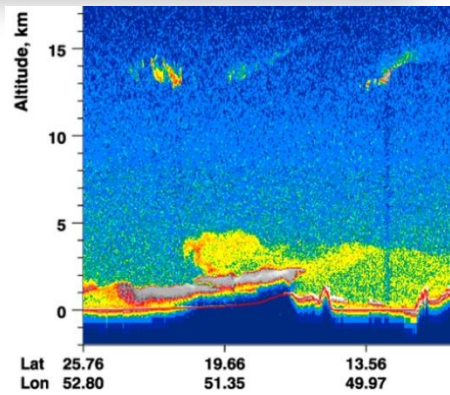
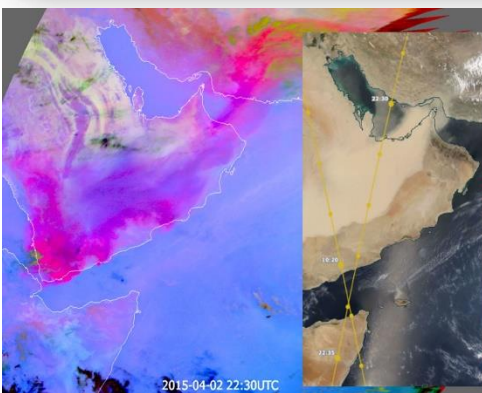
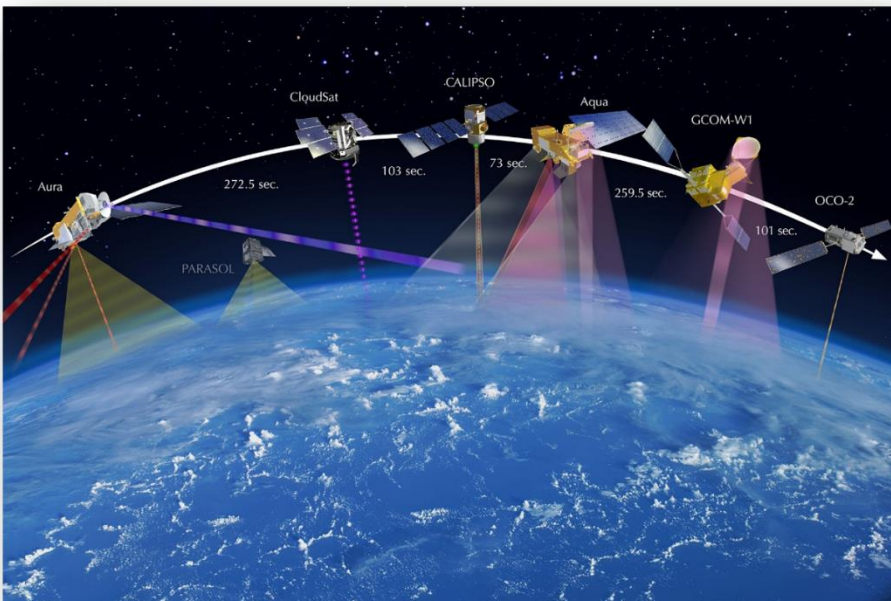
Legend

- ◆ Marine Station
- Surface Station
- HF Wave Radar
- Sea Level station
- 📍 GPS Station
- Upper Air Station
- Weather Radar

مفتاح الخريطة

- محطة بحرية
- محطة رصد سطحي
- رادار قياس الأمواج
- محطة قياس مستوى سطح البحر
- محطة تحديد موقع
- محطة رصد طبقات الجو
- رادار الطقس

The amount of open source technologies and data out there is unprecedented + AI



Research and Development

- Research and Development
 - Watch for new technology and best practice
 - Vulnerability and risk assessment
 - Weather and Climate Research and Consultation Services
 - Training and Capacity Building

Weather and Climate studies and consultation Services are provided up on request

Typical clients are :

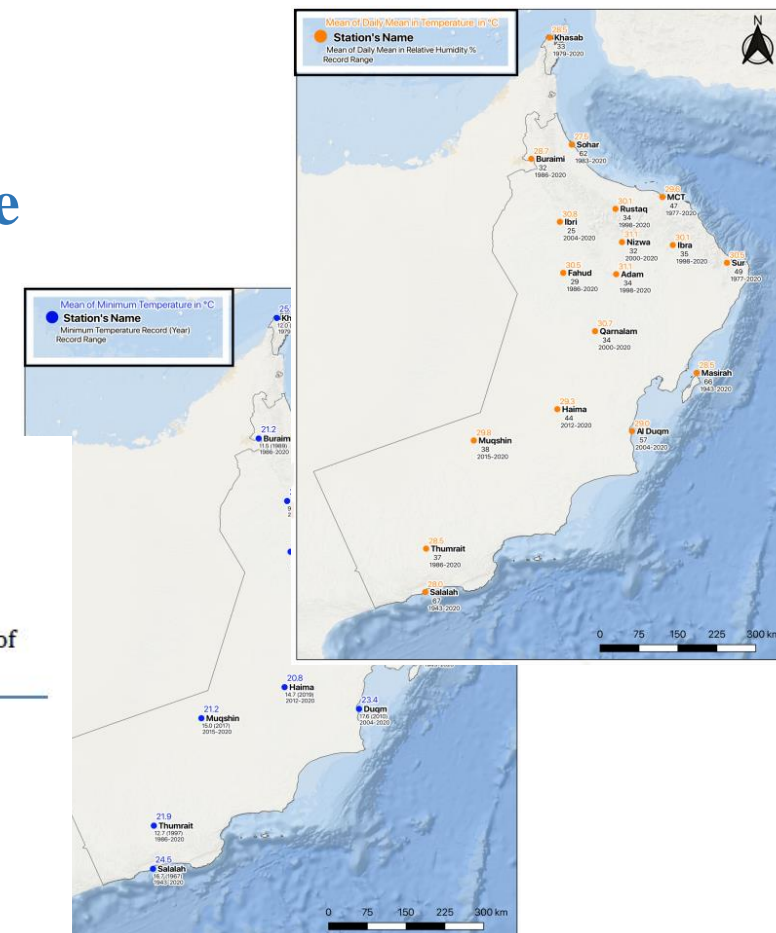
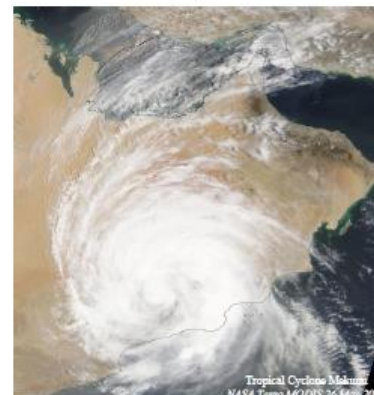
- Met Service Centres
- Insurance companies
- Consulting companies
- Universities and Research bodies



Climate Analysis over the Concession Area of Petroleum Development Oman

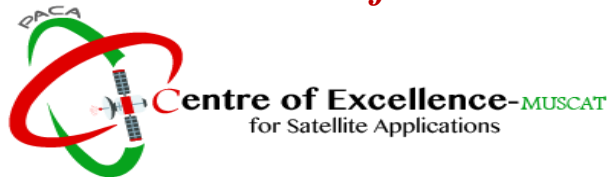
Civil Aviation Authority
Directorate General of Meteorology
Department of Research and Development

12 May 2020



Special focus on Satellite Applications

WMO Centre of Excellence for Satellite Applications- Muscat



➤ Regional hub for satellite applications research, collaboration and training



Satellite Application Course -2019

Thank You