

RGB Practical Meteosat, MODES and Sentinel Satellite

Ibrahim Al Abdulsalam

Directorate General of Meteorology / Oman
Center of Excellence for Satellite Applications

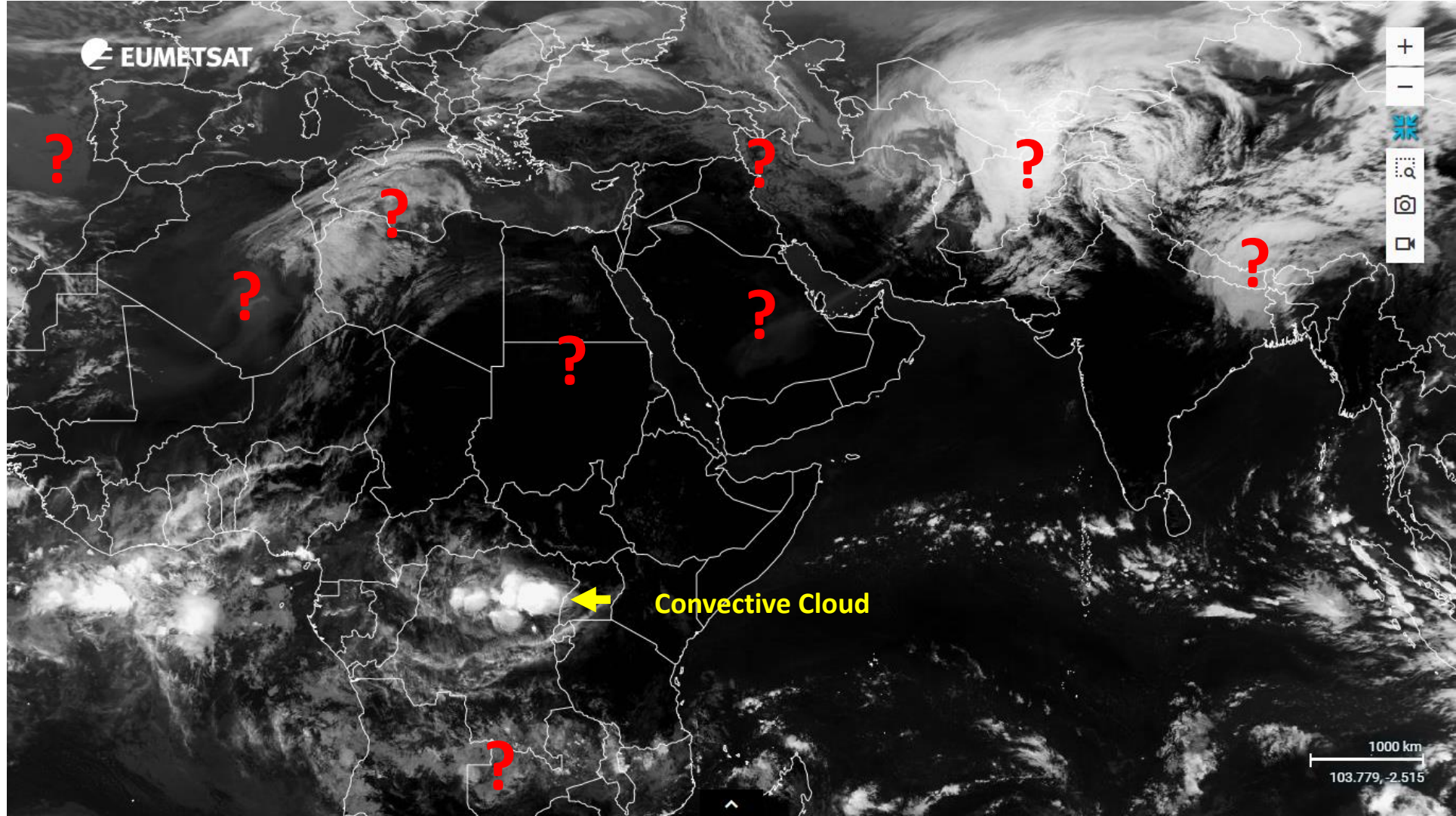
i.alabdulsalam@met.gov.om

Contents :

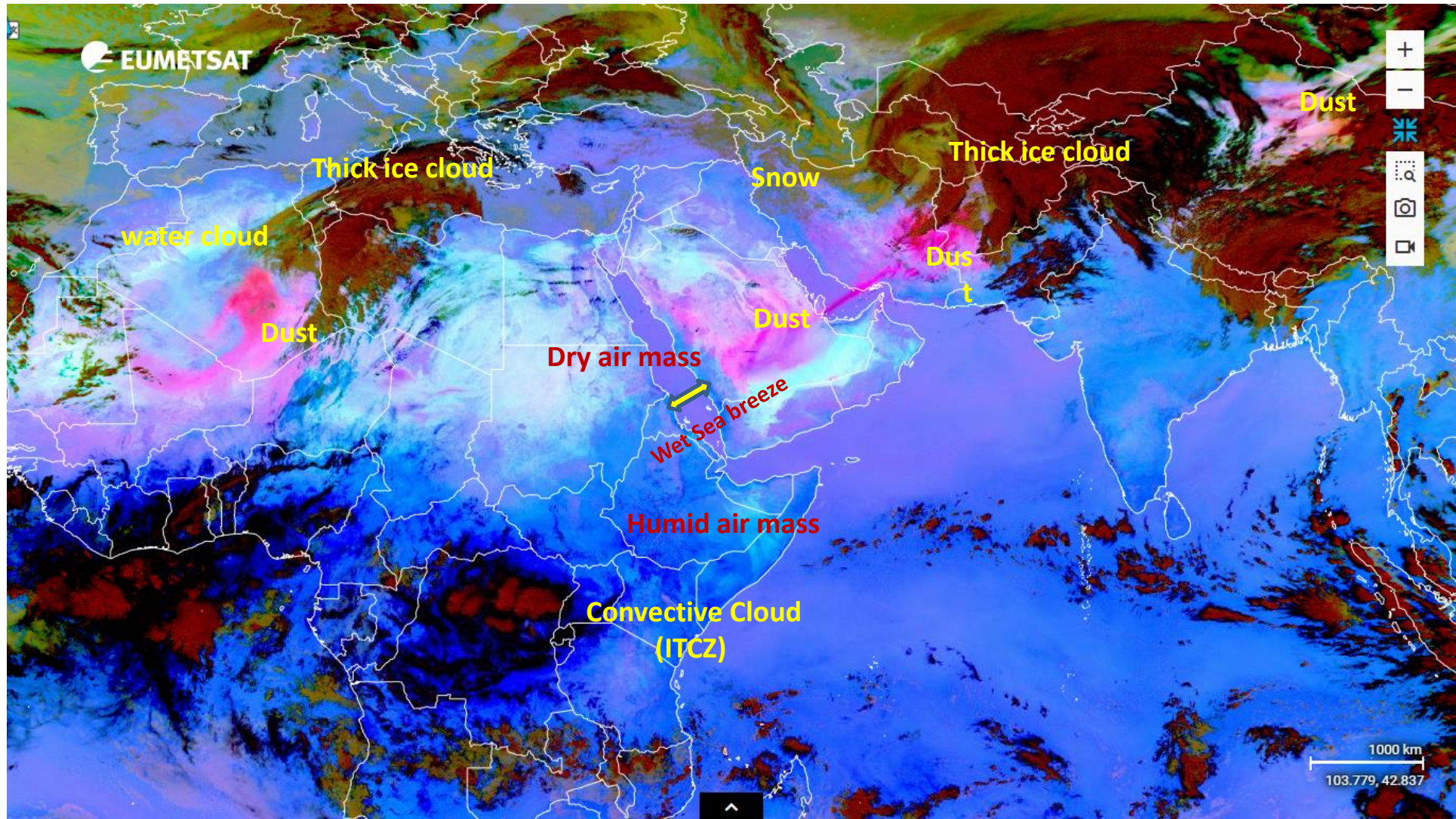
- **Some Important points to be aware about when you look at satellite RGB images**
- **Short case study to look at different spatial resolution images from MODES (Terra and Aqua) and Sentinel satellites**



One channel 10.8 IR

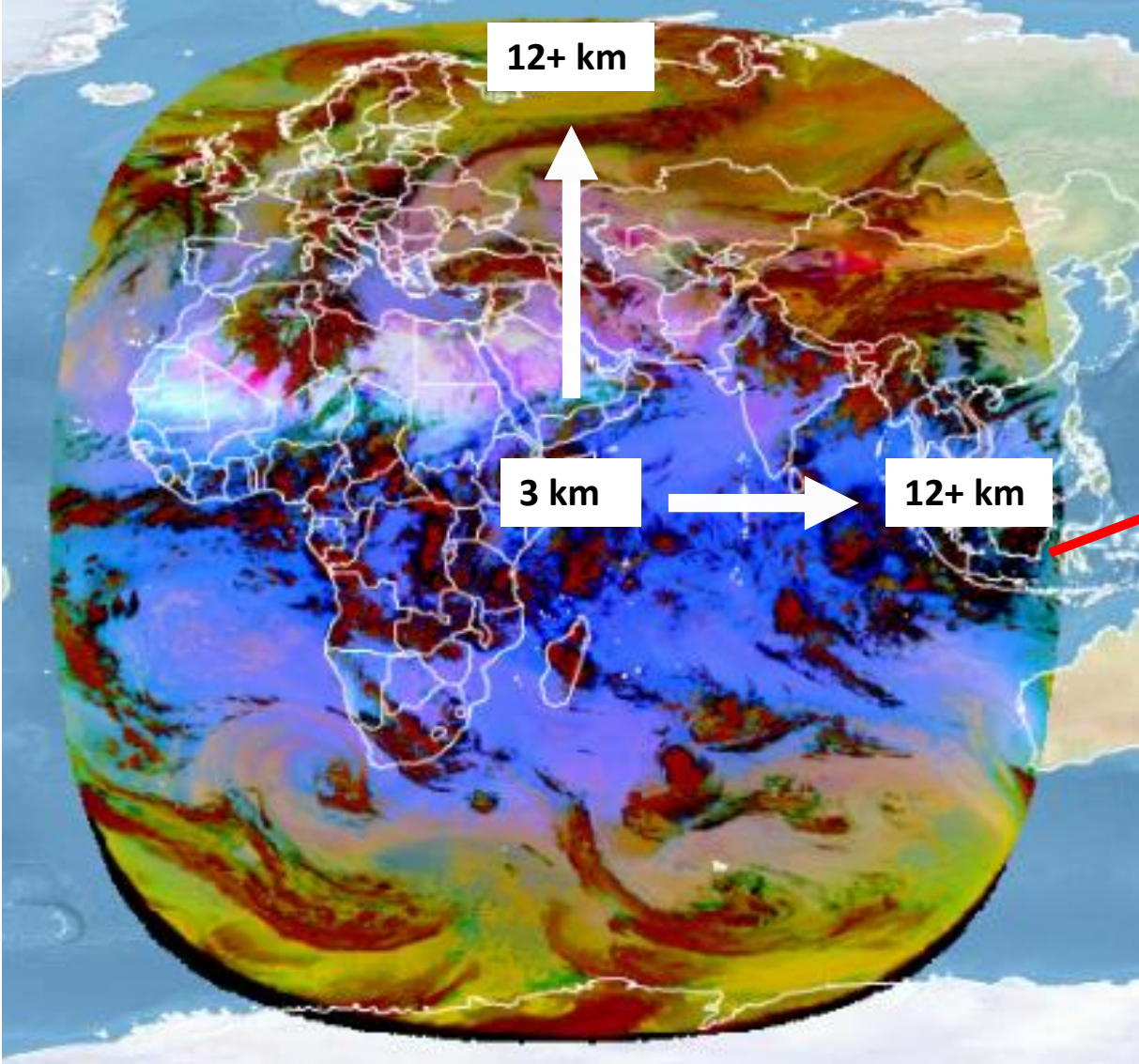


Dust RGB

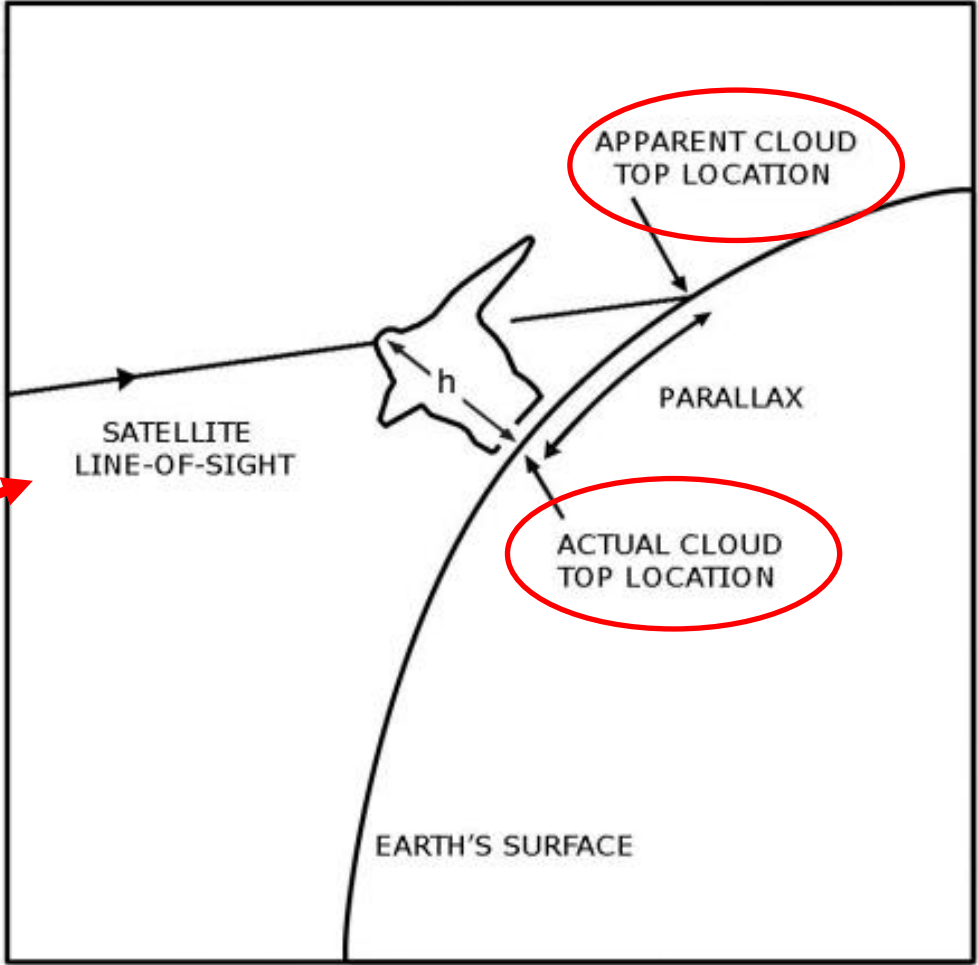


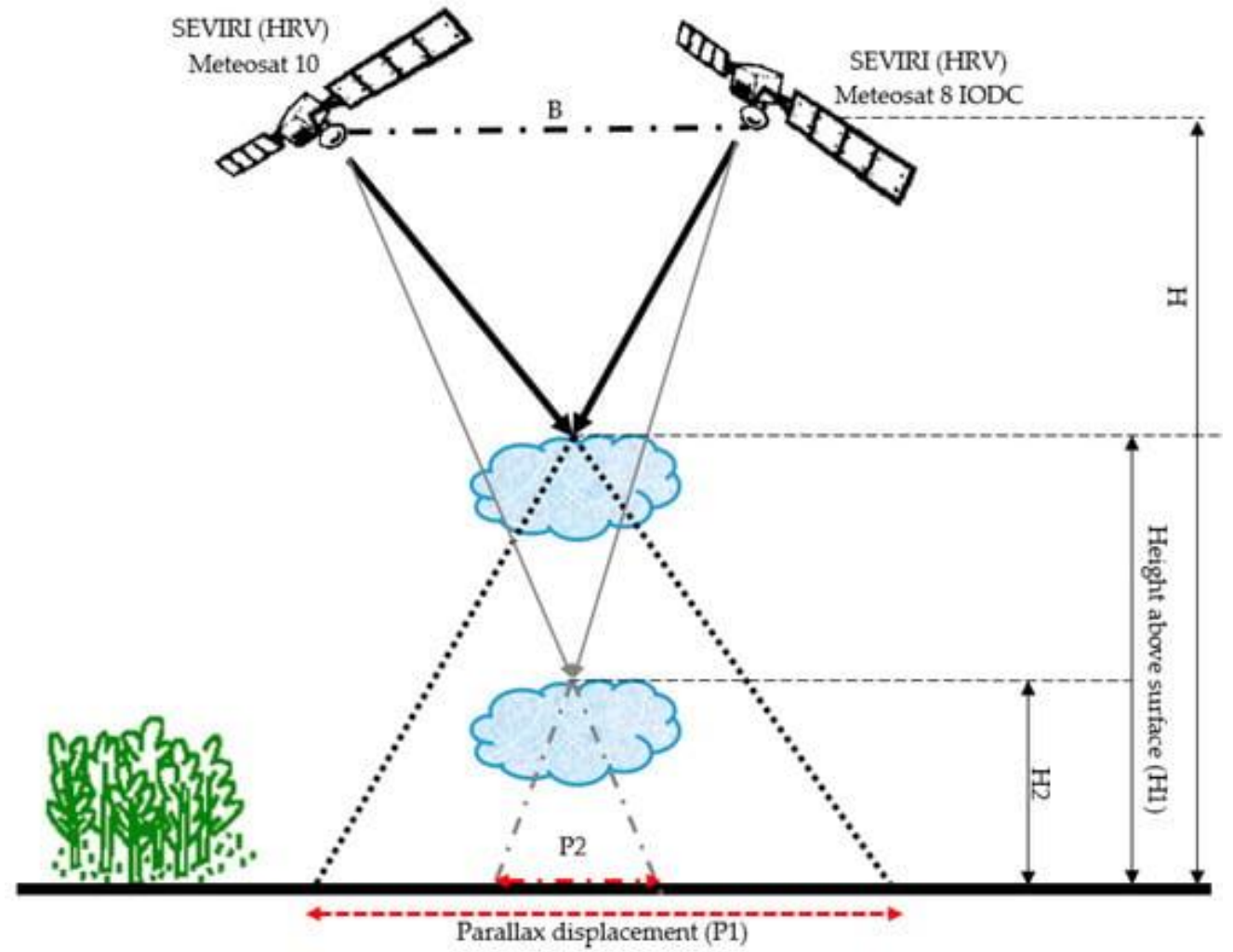
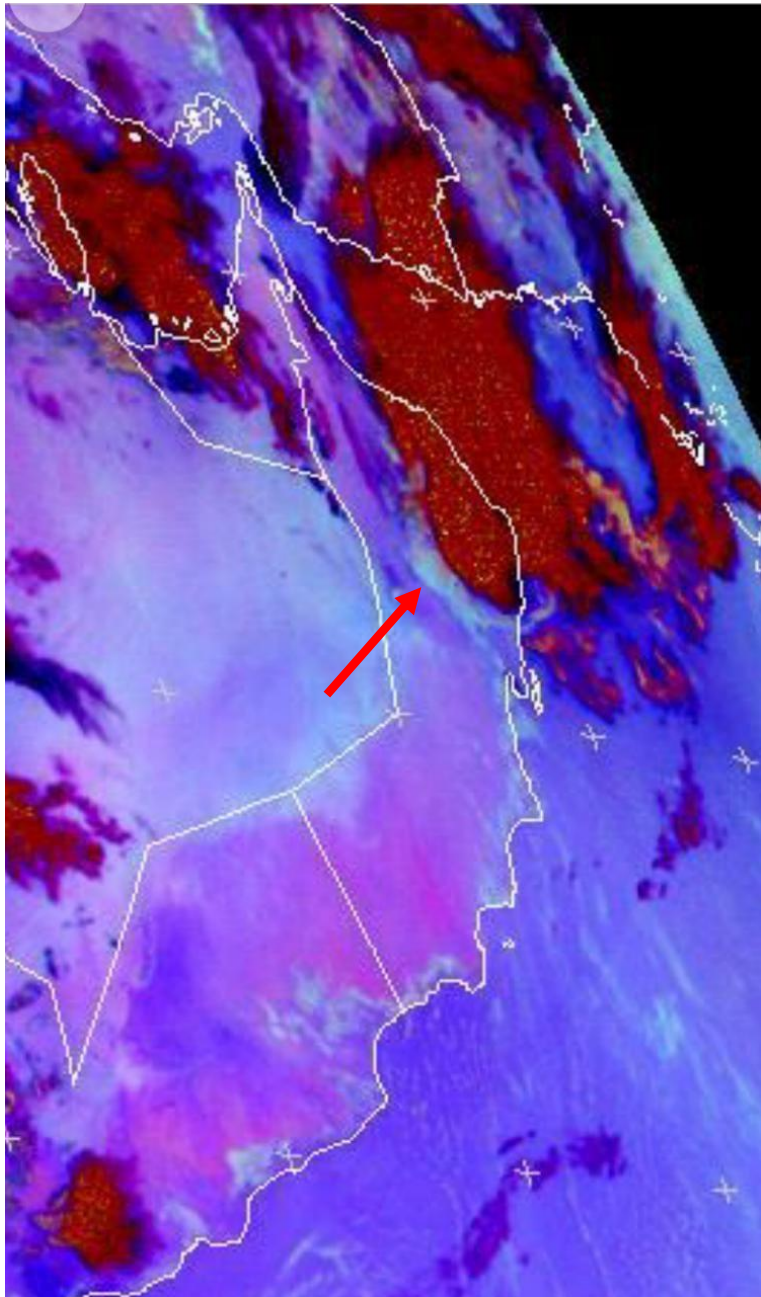
**Some Important points to be aware about
when you look at satellite images and RGBs**

Spatial Resolution

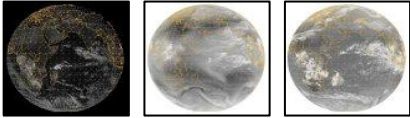


Parallax Error

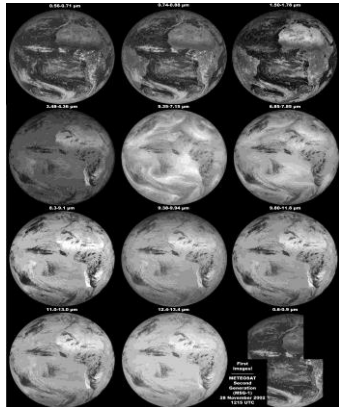




THANKS TO EUMETSAT!!

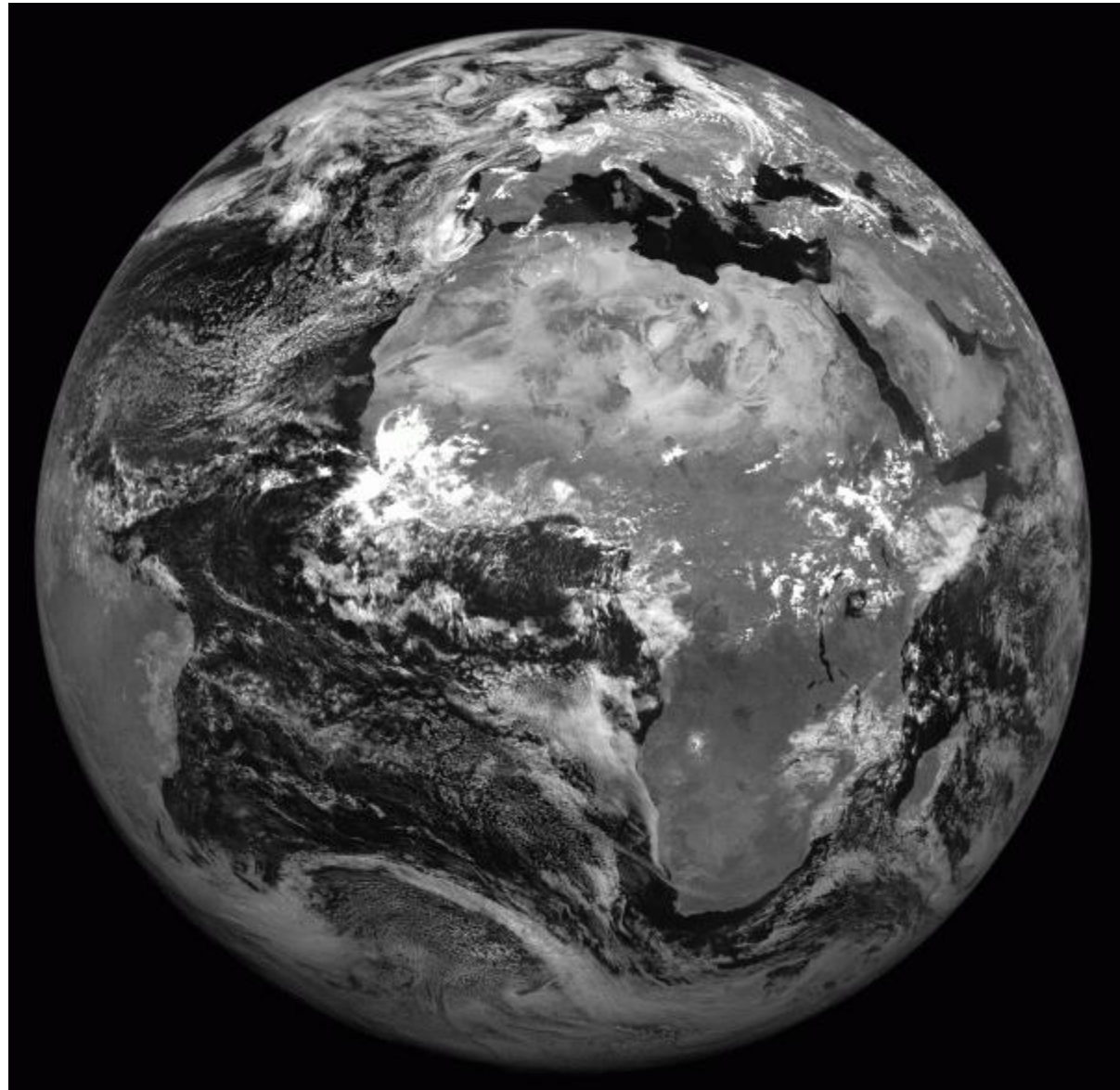


Meteosat 7
3 Channels



Meteosat 8
12 Channels

Meteosat 9
12 Channels



Let us see that !

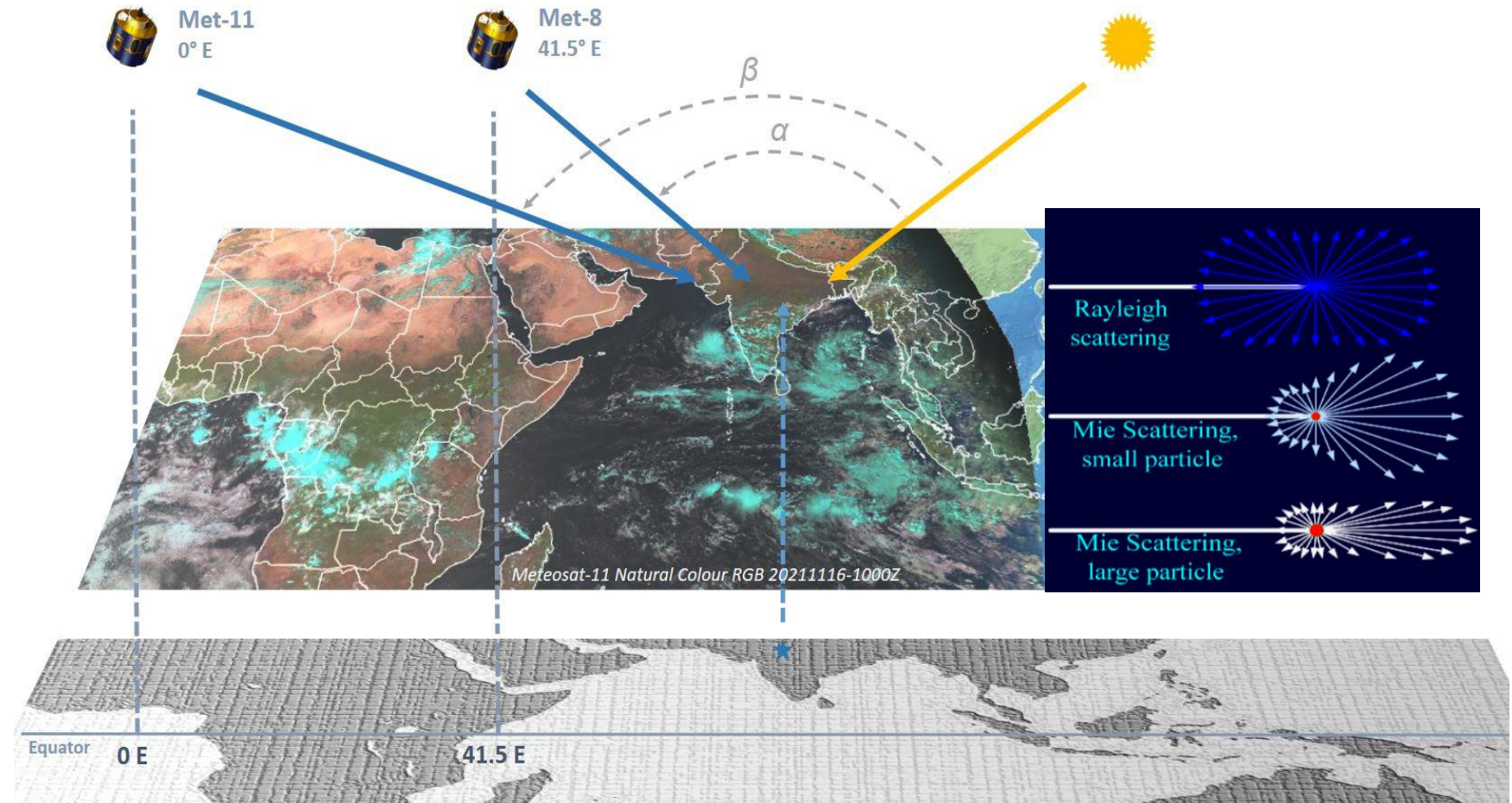


<https://www.eumetsat.int/>



<https://worldview.earthdata.nasa.gov/>

Sun angle and forward scattering



Let us see that !

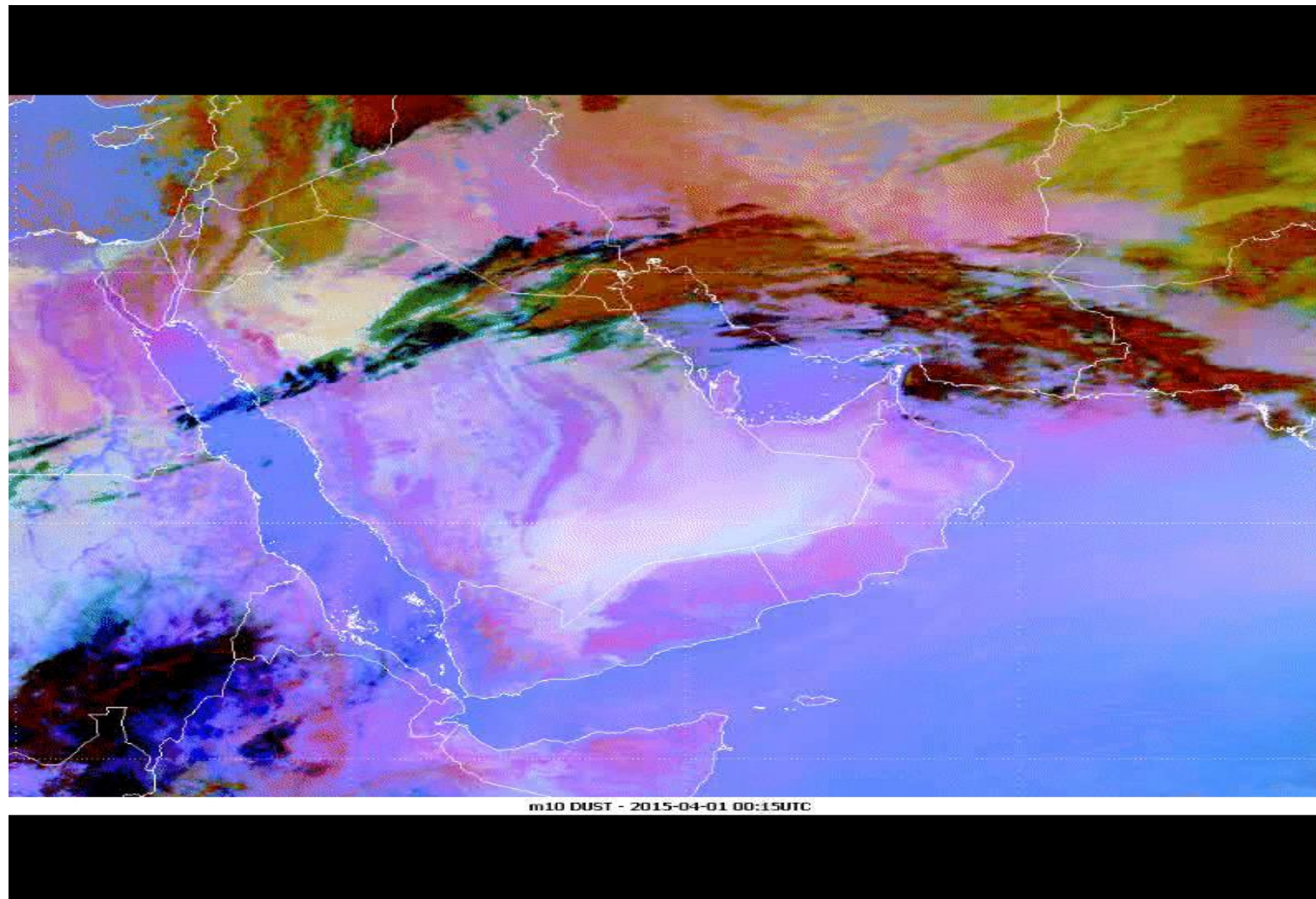
<https://view.eumetsat.int/product/viewer?v=default>

2022 May 19 02 : 45 UTC

During several days around mid-November 2021 a layer of haze was covering large part of India stretching into the Arabian Sea.

<https://www.eumetsat.int/haze-over-india>

Dust RGB/ Dust Storm 2015



Use other data and products to verify your analysis!

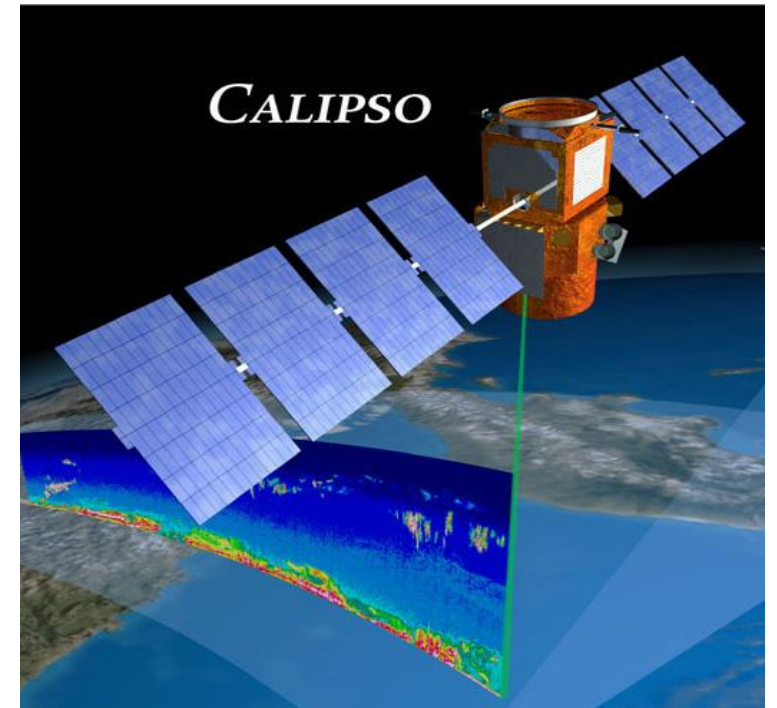
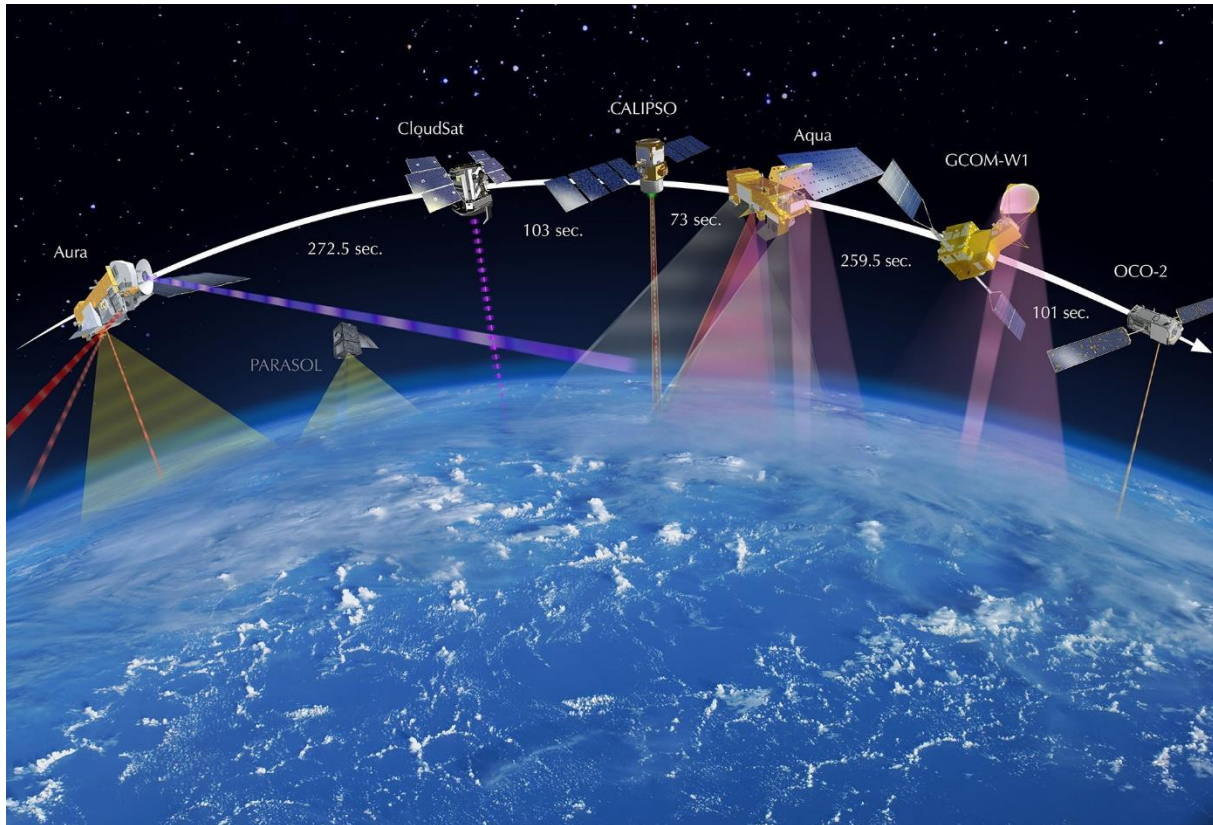
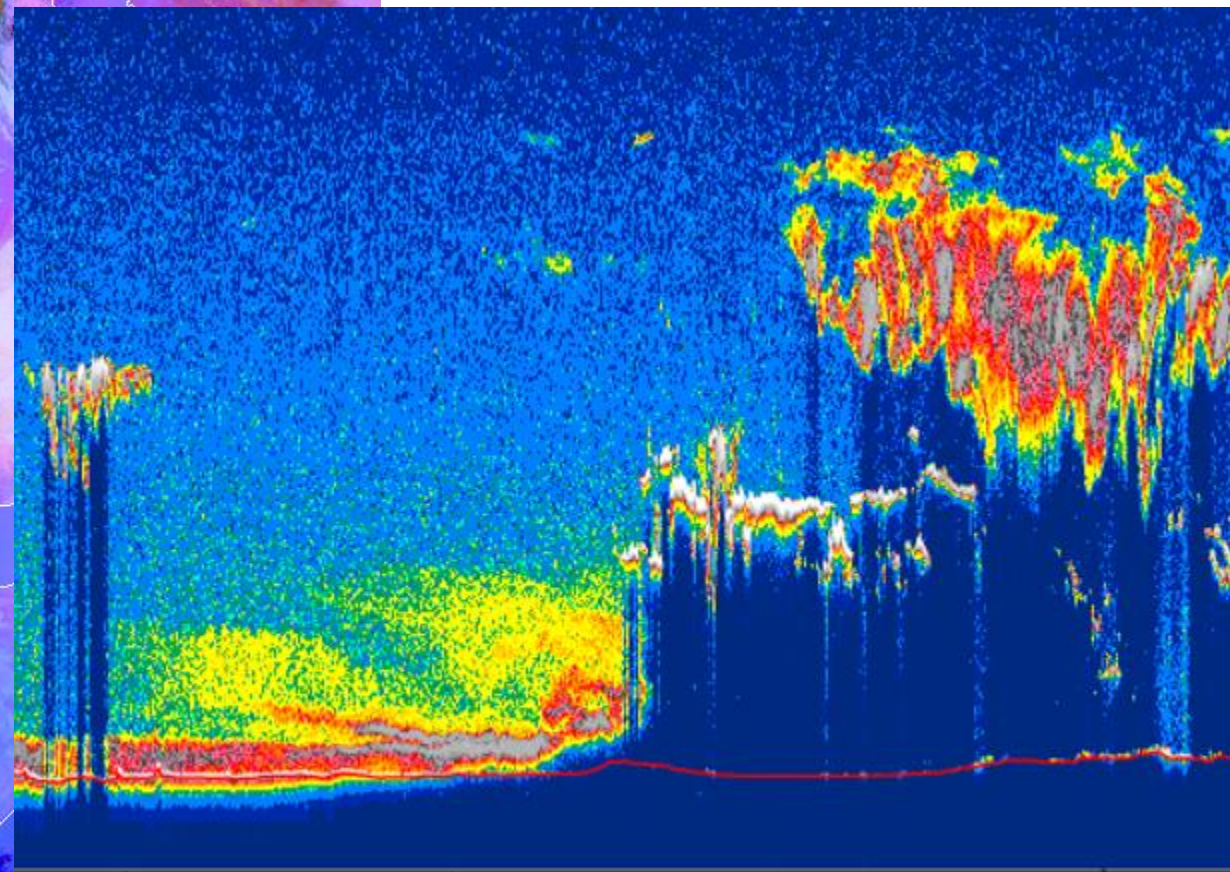
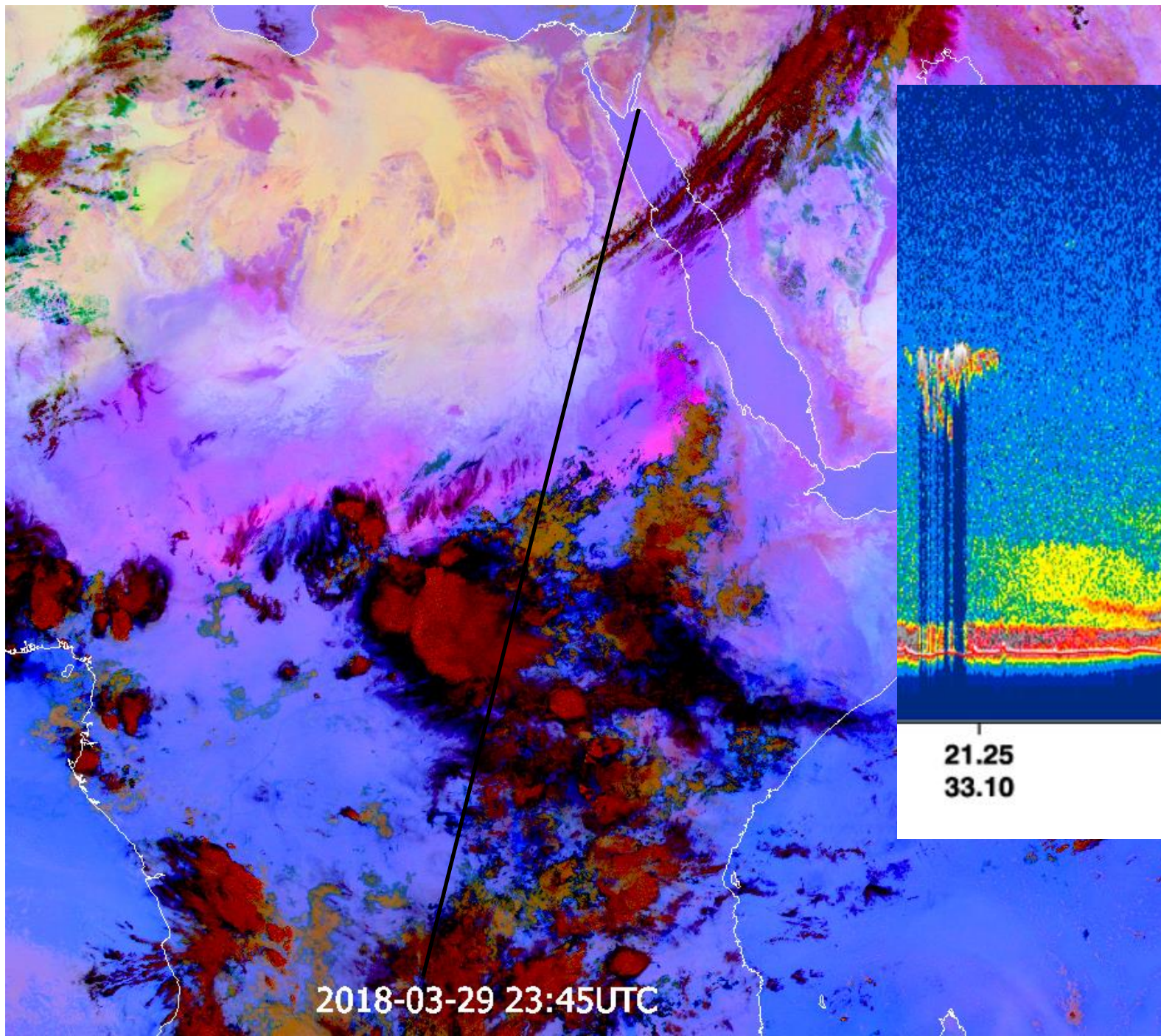
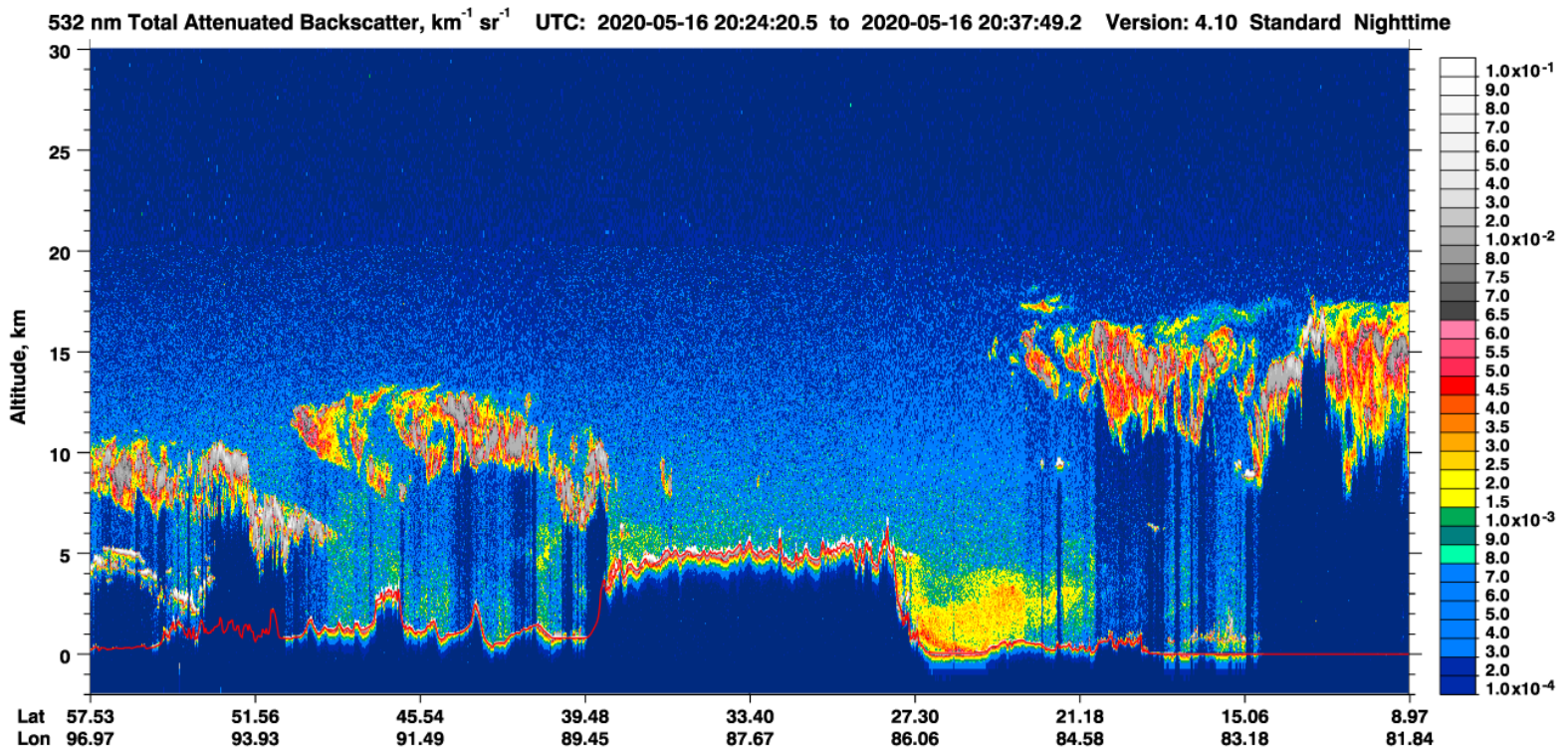
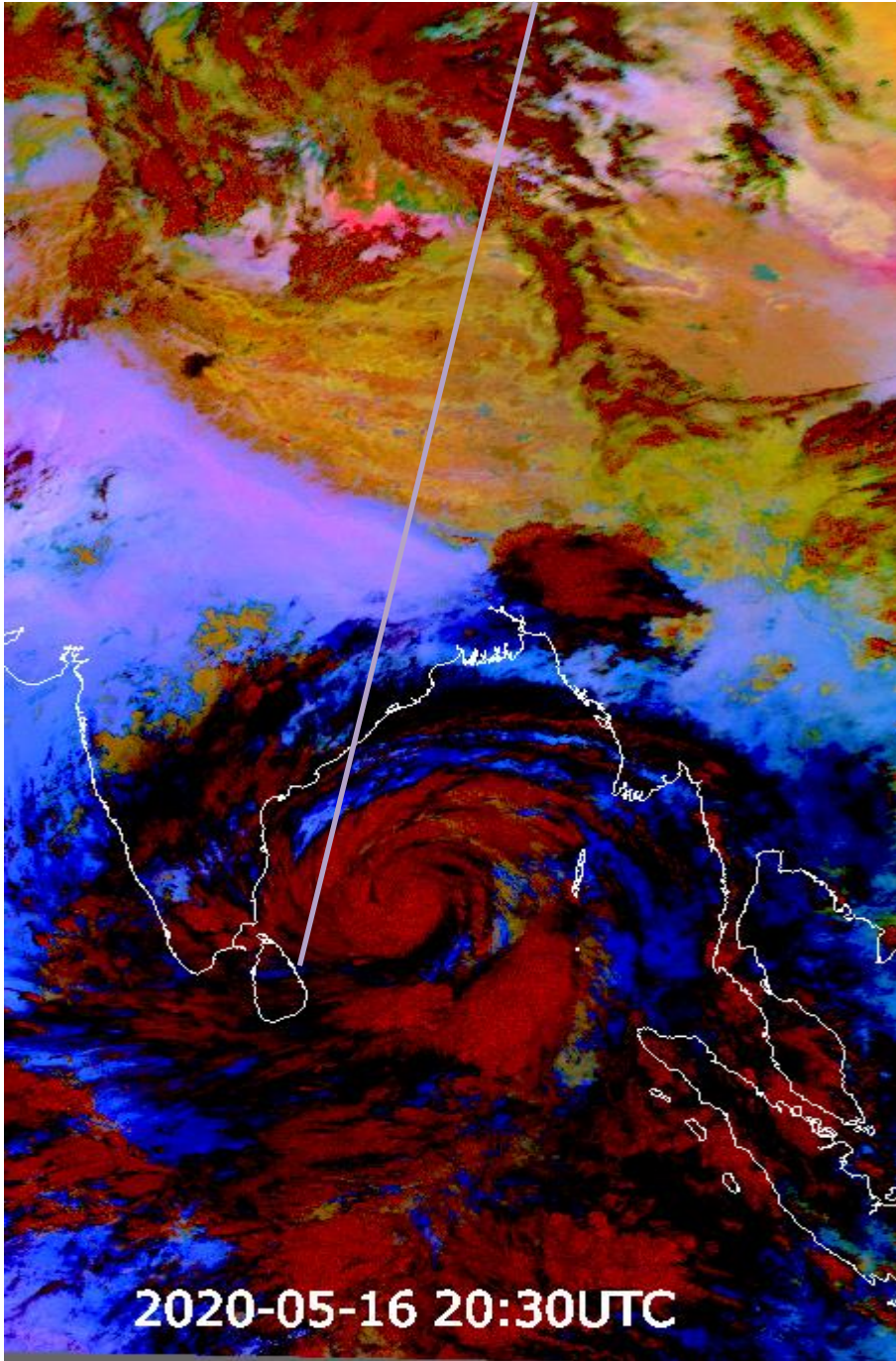


Image above: The CALIPSO spacecraft uses an innovative lidar and imaging system to reveal the secrets of clouds and aerosols. [NASA](#)

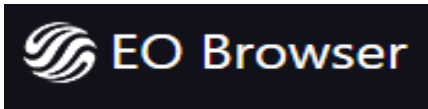


21.25	15.15	9.04	2.92
33.10	31.70	30.36	29.05

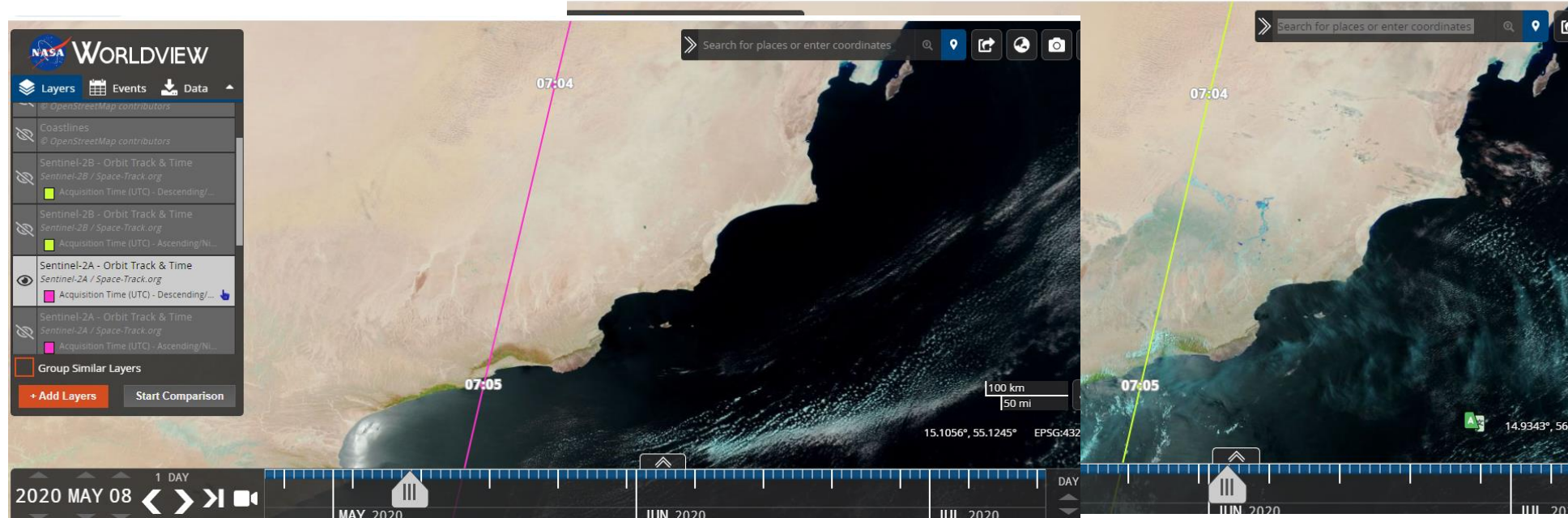
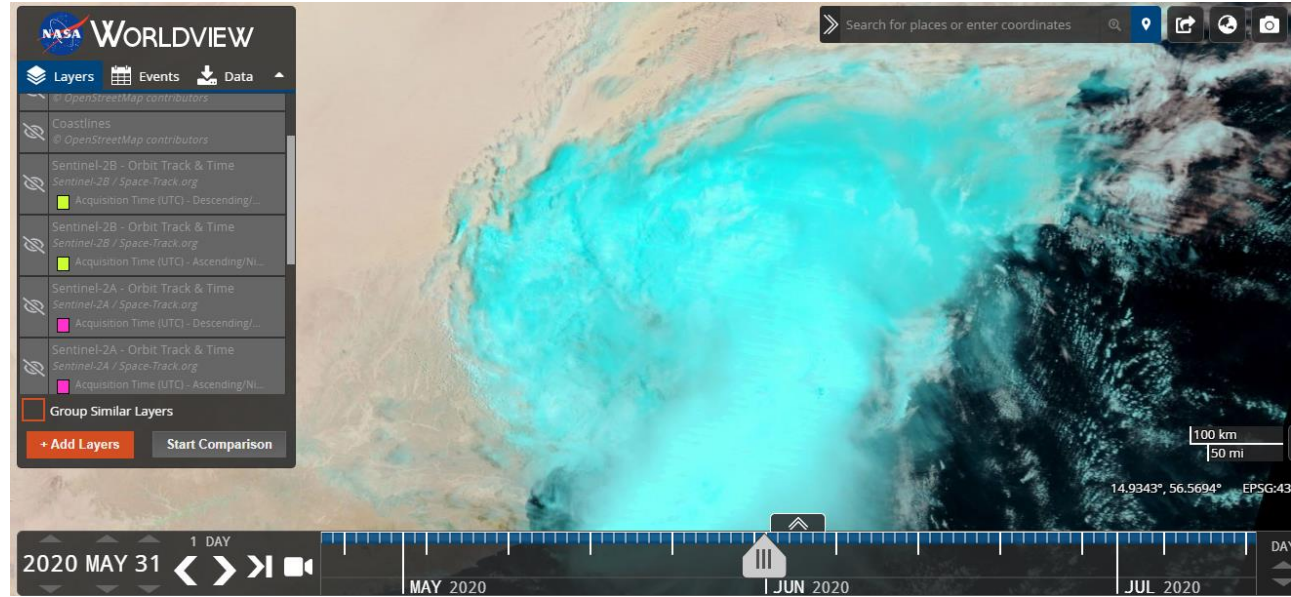




<https://worldview.earthdata.nasa.gov/>



<https://apps.sentinel-hub.com/eo-browser/>



THANK YOU